

210 mm

正面

150.0 mm



@PCCoolerOC3

www.pccooler.com | Q

PCCOOLER®

GI-X  
SERIES

INSTALLATION

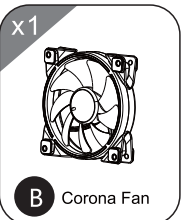
正反印刷  
居中对折

反面

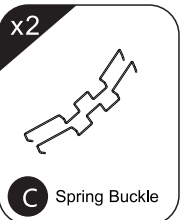
### COMPONENTS



A Heatsink



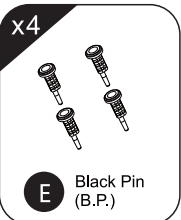
B Corona Fan



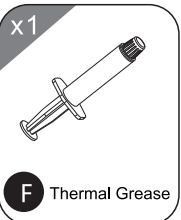
C Spring Buckle



D LGA775/115X Bracket



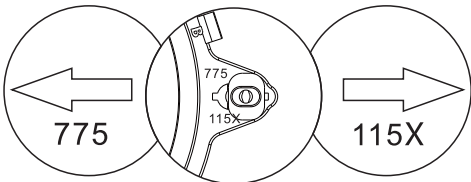
E Black Pin (B.P.)



F Thermal Grease

### ATTENTION

1. Push the adjustable button on the bracket.
2. Button's left side is use for 775, the right side is use for 115X

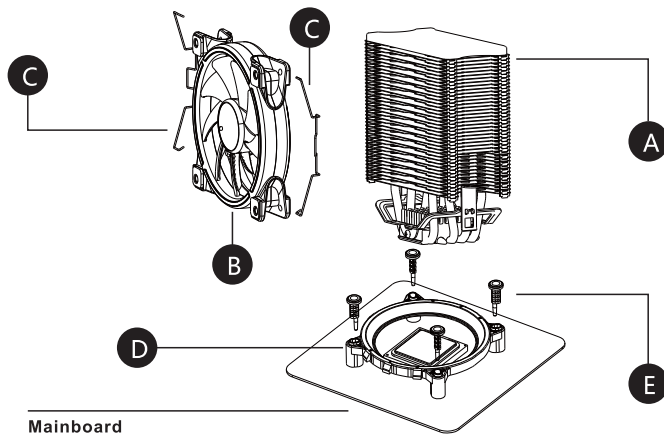


#### WARNING

- Be careful of the sharp fin edges to avoid injury
- Keep away from children

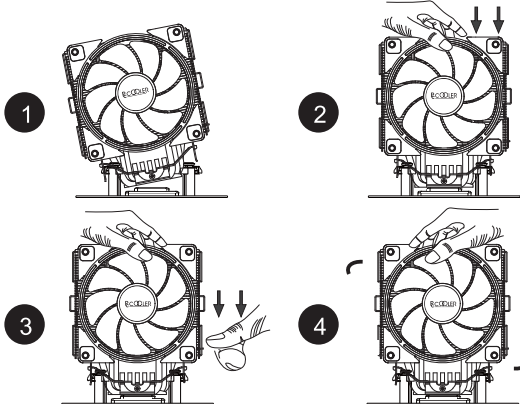
\* The picture is only for reference, please make the object as the standard.

### For Intel LGA775/115X



Mainboard

### For AMD up to AM4



正反印刷  
居中对折